



Simon Grey CDT dip RCS (Eng) 2011

SAME DAY SERVICES

Ivobase Injection Acrylic Dentures

Implant Denture Conversion subject to components

Full / Full Dentures
Full Upper or Full Lower Denture

1-3 Tooth Denture
4-8 Tooth Denture
9+ Tooth Denture



Bredent Flexible Dentures

1-3 Tooth Denture
4-8 Tooth Denture
9+ Tooth Denture



Miscellaneous

Denture Repair / Addition / Add Clasp
Denture Reline / Rebase Cold Cure

Tooth Bleaching Shields 1mm Pressure Formed
Essex Retainer 1mm Pressure Formed



from	£ 550
	£2000
	£1250
	£ 750
	£1000
	£1100

	£ 750
	£1000
	£1100

from	£ 80
from	£ 150

	£ 150
	£ 125



5 Different Tooth Shades with Composite Contouring/Characterisation



(Same as Left Picture) Case In-Situ – Note Gum Colour Matching



Full / Partial Dentures with Composite Contouring/Characterisation



Upper/Lower Metal Dentures To Match Patients Gum Colouration

IMPLANTS

All-On-4 Upper or Lower

Full Denture with 4 Locators

Full Denture with 2 Locators

Radiographic Stent (Diagnostic Purposes)

Denture Copy Stent (Diagnostic Purposes)

Custom Impression Tray (for Dentist)

from £2000*

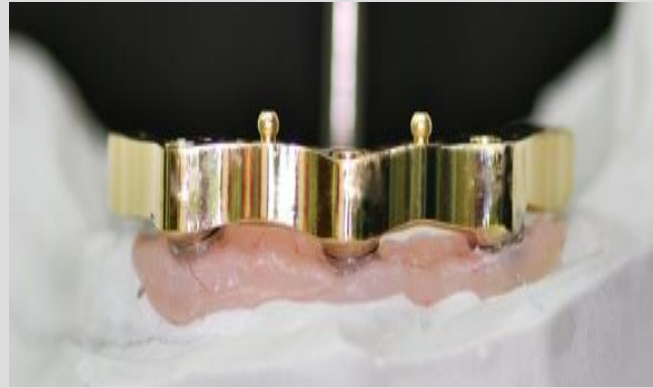
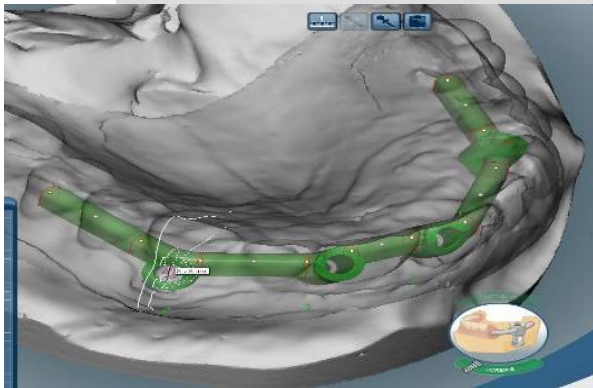
from £1350*

from £1100*

£ 75

£ 75

from £ 20



Nobel Biocare

Astra

Dentsply

Straumann

Ankylos

*Excludes implant components & precious alloys

BPS – Biofunctional Denture System

IvoBase Injection Implant Retained Dentures

Implant Retained Full / Full Customised Dentures
 Implant Retained Full Upper or Lower Customised Denture

Ivobase Injection Hi-Impact Acrylic Dentures

Full / Full Dentures
 Full Upper or Full Lower Denture
 Denture Flange Customisation (per denture)
 1-3 Tooth Denture
 4-8 Tooth Denture
 9+ Tooth Denture

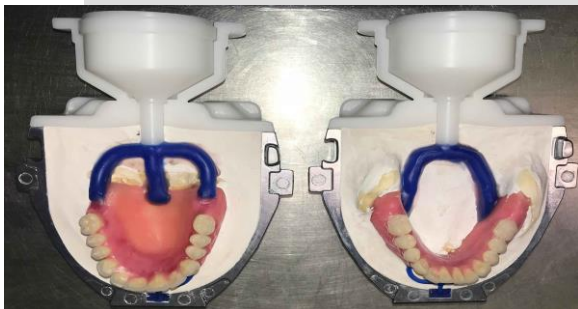
Chrome Cobalt Dentures

1-3 Tooth Vitalium Metal Denture
 4-8 Tooth Vitalium Metal Denture
 9+ Tooth Vitalium Metal Denture

from £3000^
 from £1750^

from £1200
 from £ 750
 from £ 100
 from £ 450
 from £ 650
 from £ 800

from £ 550
 from £ 700
 from £ 850



^Excludes implant components & precious alloys.



FLEXIBLE DENTURES

Bre.flex Flexible Dentures

1-3 Tooth Denture - Pink/Vita Shaded Base*
4-8 Tooth Denture - Pink/Vita Shaded Base*
9+ Tooth Denture - Pink/Vita Shaded Base*

Vita Shaded Flexible Clasps*

£550

£700

£850

from £ 45

*Denture Shades – Pink Translucent, Pink1,2,3. Vita Frame/Clasp Shades - A1,A2,A3,B2,B3

Dreve Pressure Formed Orthodontic Appliances & Gumshields

Anti Snoring Device for Sleep Apnea

P.O.A

Bleaching Trays One Pair 1mm Pressure Formed

£150

Essex Retainer 1mm Pressure Formed

£100

Dreve Signature Junior

£ 45

Dreve Signature Elite

£ 60

Elite Signature Pro

£ 75

Team/School Colours

P.O.A

Design / Picture Inserts

P.O.A

Soft Bite Raising Appliance for Bruxism

£100

Hard Bite Raising Appliance for Bruxism

£150



26 Clyde Terrace
Forest Hill
London
SE23 3BA



Phone: 020 7928 7070

Mobile: 07809667196

Web: www.stg-dental.co.uk

Email: info@stg-dental.co.uk

Twitter: @StG_Dental

Instagram: stgeorgesdental

Nearest Transportation:

National Rail :- Forest Hill (exit plat 1)

London Overground :- Forest Hill (exit plat 1)

Buses :- P4, 122, 176, 185, 197, 356

